



## Lao PDR Country Presentation Scaling Up Water, Sanitation and Hygiene Education for Schools

SSHE Roundtable, Oxford 24-26/1/2005



## Background

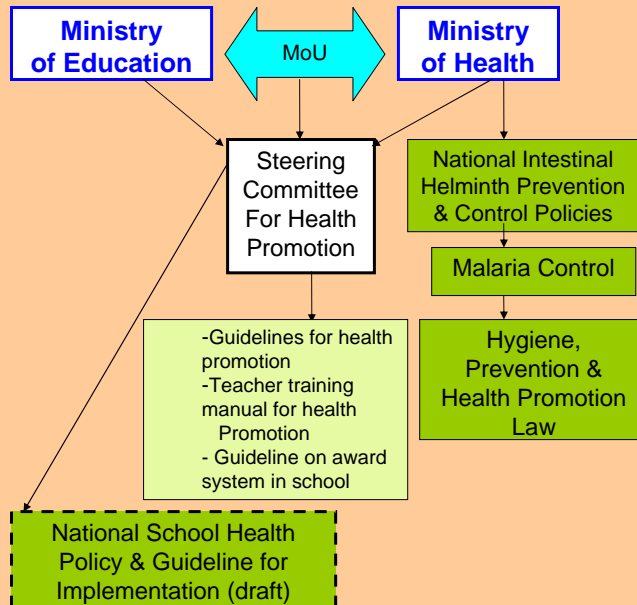
- 5.5 million people
- 47 ethnic minorities
- Adult literacy rate:  
Female 50%; Male 74%
- Population growth rate: 2.8%  
per year
- Population leaving in rural area:  
80%
- No. of Primary Schools: 8,159
- No. of Secondary Schools: 830
- No. of Pre-Schools: 744





- Net enrollment in primary schools  
Boys: 84.8%  
Girls: 78.8%
- 57% of children reach Grade 5
- 15% of schools have clean water & latrines

### National legal & policy frame work governing health, sanitation & hygiene



## **Roles of Ministry of Education & Implementing Partners:**

### MOE:

- **MOE builds the capacity of teachers to deliver health education and promote health related behavior change.**
- **MOE is responsible for curriculum development and development of supplementary readings and educational tools.**

### MOH:

- **MOH - plays a facilitating role to MOE to institutionalize, expand and improve health promotion in schools (including school deworming).**



### Others:

- **Lao Youth Union - mass organization involved in training of young hygiene promoters. Activities conducted in the communities include quizzes, song & drama performances by children to promote better hygiene.**

## Curriculum:

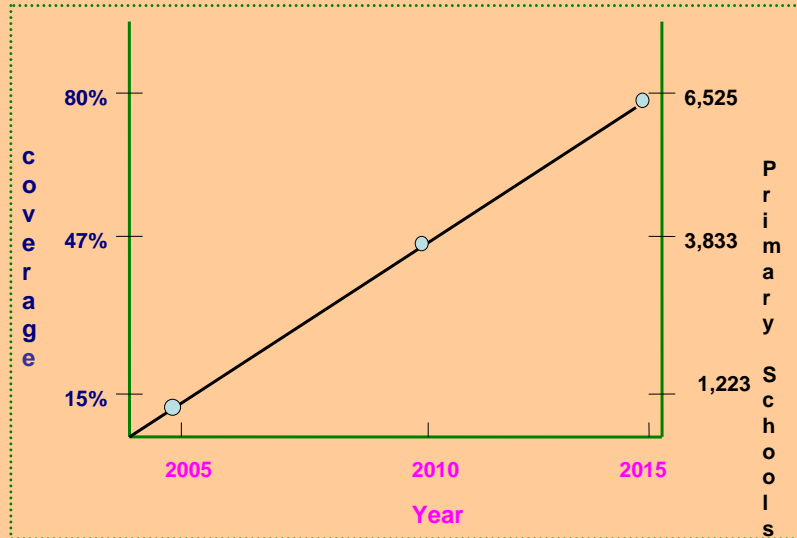


- **Health and hygiene education is integrated in the subject *The World Around Us***
- **Teacher Training Department has introduced health and hygiene into the teacher training curriculum for primary teachers**
- **The *Learning with Joy kit (Blue Box)* on health and hygiene was developed**

## School Health Policy & Implementation Guidelines

- Component 1: Personal Health and Life Skills**
- Component 2: Healthy School Environment**
- Component 3: Health and Nutrition Services**
- Component 4: Common Diseases Control and Prevention**
- Component 5: School and Community Partnership**

## Road map for Scaling Up



### Resources needed:

- Sufficient trained teachers
- Participatory learning tools & print materials
- WES Facilities
- Sustainable operations & management of WES facilities
- Effective monitoring & evaluation
- Funds



## Budget Requirement:



- \$2,500 per schools (WES facilities, participatory learning tools & materials, training of teachers, monitoring & supervision)

- \$1,325,000 per year



## Donors

- UNESCO
- WHO
- UNICEF
- World Bank
- WFP
- ACIPAC/JICA
- SIDA
- Danish Red Cross, French Red Cross & Lao Red Cross

## **Challenges**

- **National school health policy and guidelines exist but requires knowledgeable staff for implementation and monitoring**
- **Lack of funding to take to scale**
- **Coordination between sectors and donor agencies**
- **Education becoming more expensive for parents & cost sharing of WES facilities maybe unaffordable for many families in rural areas**